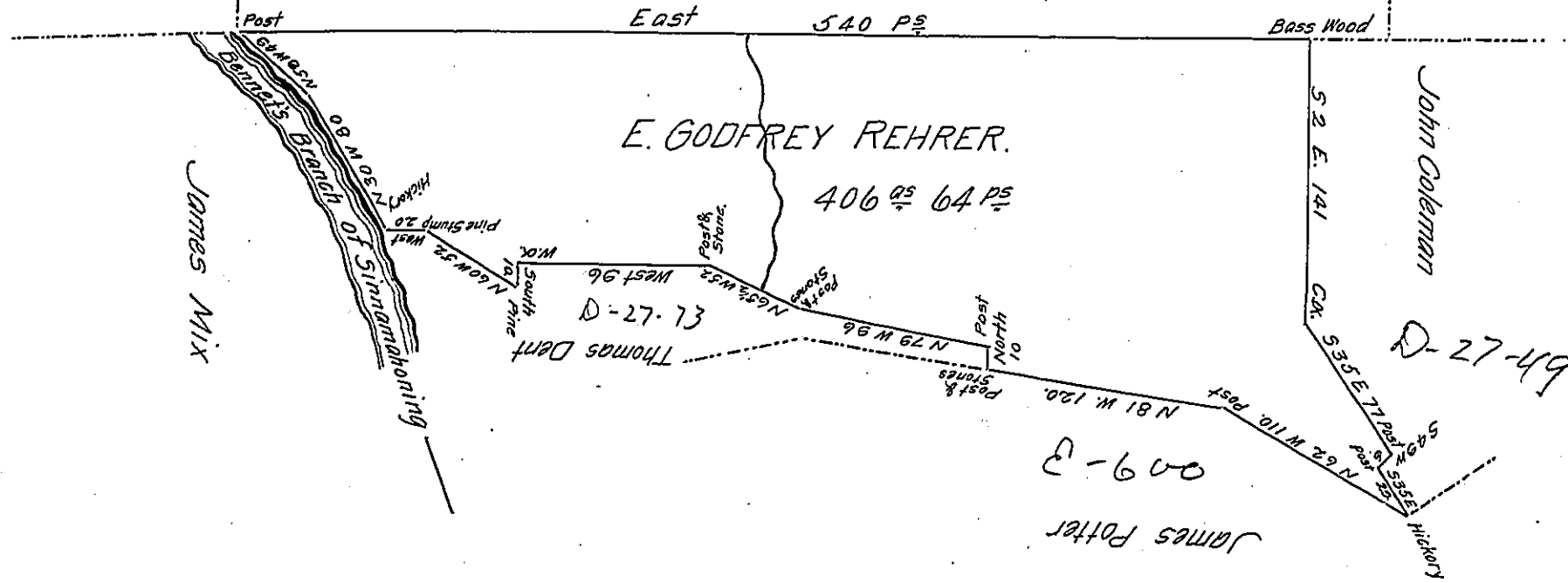


No 5453  
George Mead



A draught of a tract of land Situate in Gibson township in the County of Elk Sur-  
veyed 7<sup>th</sup> October 1856 in pursuance of a Warrant granted to E. Godfrey Rehrer  
dated 30<sup>th</sup> day of September 1856 Containing four hundred & Six Acres & Sixty  
four perches, with the allowance of Six per Cent for roads & C.

George F. Schaefer C. S.

To James Porter Brawley Esq. }  
Surveyor General.

for Elk County

IN TESTIMONY that the above is a copy of the original remaining on file in  
the Department of Internal Affairs of Pennsylvania, made  
conformably to an Act of Assembly approved the 16th day of  
February, 1833, I have hereunto set my Hand and caused  
the Seal of said Department to be affixed at Harrisburg,  
this twentyeighth day of August 1906.

*Isaac R. Brown*  
Secretary of Internal Affairs.